

## New Format for SWITRS Raw Data

**Beginning with first quarter 2002 SWITRS data, there was a change in format of raw data provided to SWITRS users.**

The Statewide Integrated Traffic Records System (SWITRS) was re-engineered beginning with collisions dated January 2002. As part of this re-engineering, we have changed the format of the raw data provided upon request to SWITRS data users.

Beginning with first quarter 2002 data, the raw data will no longer be available in the format previously provided. The new format is in three separate files in ASCII fixed record length. The three files are the collision data file, party data file and victim data file. All three files are linked together with the same case ID# of each collision. The victim data is linked to the collision file by the case ID# and to their respective party by the party #.

Starting February 2013, the I-SWITRS raw data is now in Comma Separated Value (.txt) format, but the field values are the same. Previously when the raw data was in Comma Separated Value (.csv) format, the data in the case ID# field did not display correctly. For collisions before 2002, a value such as 3.40401E+18 would display instead of the 19 digit number. Also, a case ID# of 7 digits for collisions after 2001 would display without the leading zeroes.

*Please see Appendix A for instructions on how to open the files in Excel.*

Following is the raw data export layout for this new format. The new format is comma delimited and is available for prior years 2000 through 2009 as well as the available 2010 and available 2011.

Latitude and Longitude coordinates were added to SWITRS data beginning April 2006.

For any questions regarding this change, contact the Information Services Unit at (916) 843-4230.

## SWITRS Collision Raw Data Export Layout

H:\DATA\042\ISU\SW.RAWDATANW.DOC  
2/1/2013

Item Name	Datatype(Length)	Description	Possible Values
Case Id	Varchar2(19)	the unique identifier of the collision report (barcode beginning 2002; 19 digit code prior to 2002)	
Collision Year	Number(4)	the year when the collision occurred	
Process Date	Number(8)	(YYYYMMDD)	
Jurisdiction	Number(4)	Four numerics assigned by DOJ	
Collision Date	Number(8)	the date when the collision occurred (YYYYMMDD)	
Collision Time	Number(4)	the time when the collision occurred (24 hour time)	Data may appear with no leading zero(s).
Officer Id	Varchar2(8)		
Reporting District	Varchar2(5)		
Day of Week	Char(1)	the code for the day of the week when the collision occurred	1 - Monday 2 - Tuesday 3 - Wednesday 4 - Thursday 5 - Friday 6 - Saturday 7 - Sunday
CHP Shift	Char(1)		1 - 0600 thru 1359 2 - 1400 thru 2159 3 - 2200 thru 0559 4 - CHP Not Stated 5 - Not CHP
Population	Char(1)		1 - Incorporated (less than 2500) 2 - Incorporated (2500 - 10000) 3 - Incorporated (10000 - 25000) 4 - Incorporated (25000 - 50000) 5 - Incorporated (50000 - 100000) 6 - Incorporated (100000 - 250000) 7 - Incorporated (over 250000) 9 - Unincorporated (Rural) 0 - University (Private Property) - - Not Stated
County City Location	Varchar2(4)	the location code of where the collision occurred	Data may appear with no leading zero.
Special Condition	Char(1)		1 - Schoolbus on Public Roadway (CHP Beat or CHP Adm Beat 901) 2 - State University (Also SFIA)

			<ul style="list-style-type: none"> <li>3 - Schoolbus Not on Public Roadway (CHP Adm Beat 903)</li> <li>4 - Offroad (Unimproved) (CHP Adm Beat 906, 907)</li> <li>5 - Vista Point or Rest Area (CHP Adm Beat 903) or Scales or Inspection Facility (CHP Com Beat 860-898)</li> <li>6 - Other Public Access (Improved) (CHP Adm Beat 903)</li> <li>0 - Not Above</li> <li>- - Not Stated</li> </ul>
Beat Type	Char(1)		<ul style="list-style-type: none"> <li>1 - CHP State Highway</li> <li>2 - CHP County Road Line</li> <li>3 - CHP County Road Area</li> <li>4 - Schoolbus on City Roadway (CHP Adm Beat 901)</li> <li>5 - Schoolbus not on Public Roadway (CHP Adm Beat 903)</li> <li>6 - Offroad (Unimproved) (CHP Adm Beat 906, 907)</li> <li>7 - Vista Point or Rest Area (CHP Adm Beat 903) or Scales or Inspection Facility (CHP Com Beat 860-898)</li> <li>8 - Other Public Access (Improved) (CHP Adm Beat 903)</li> <li>0 - Not CHP</li> </ul>
CHP Beat Type	Char(1)		<ul style="list-style-type: none"> <li>1 - Interstate</li> <li>2 - US Highway</li> <li>3 - State Route</li> <li>4 - County Road Line</li> <li>5 - County Road Area</li> <li>A - Safety Services Program Beats</li> <li>S - Administrative Beats (900's)</li> <li>0 - Not CHP</li> <li>Contract City:</li> <li>6 - US Highway</li> <li>7 - State Route</li> <li>8 - County Road Line</li> <li>9 - County Road Area</li> </ul>
City Division LAPD	Char(1)		Includes blanks and dashes as not stated.
CHP Beat Class	Char(1)		<ul style="list-style-type: none"> <li>1 - CHP Primary</li> <li>2 - CHP Other</li> <li>0 - Not CHP</li> </ul>
Beat Number	Varchar2(6)		

Primary Rd	Varchar2(50)		
Secondary Rd	Varchar2(50)		
Distance	Number(9,2)		distance converted to feet
Direction	Char(1)		N - North E - East S - South W - West - or blank - Not Stated, in Intersection
Intersection	Char(1)		Y - Intersection N - Not Intersection Blank - Not stated
Weather 1	Char(1)	the weather condition at the time of the collision	A - Clear B - Cloudy C - Raining D - Snowing E - Fog F - Other G - Wind - - Not Stated
Weather 2	Char(1)	the weather condition at the time of the collision, if a second description is necessary	same as weather 1 above
State Highway Indicator	Char(1)		Y - State Highway N - Not State Highway Blank - Not stated
Caltrans County	Char(3)		Includes blanks and nulls
Caltrans District	Number(2)		
State Route	Number(3)		0 = Not State Highway
Route Suffix	Char(1)		
Postmile Prefix	Char(1)		
Postmile	Number(6,3)		
Location Type	Char(1)		H - Highway I - Intersection R - Ramp (or Collector) - or blank - Not State Highway
Ramp Intersection	Char(1)		1 - Ramp Exit, Last 50 Feet 2 - Mid-Ramp 3 - Ramp Entry, First 50 Feet 4 - Not State Highway, Ramp-related, Within 100 Feet 5 - Intersection 6 - Not State Highway, Intersection-related, Within 250 Feet 7 - Highway

			8 - Not State Highway - - Not Stated
Side Of Highway	Char(1)	Code provided by Caltrans Coders; applies to divided highway, based on nominal direction of route; for single vehicle is same as nominal direction of travel, overruled by impact with second vehicle after crossing median	N - Northbound S - Southbound E - Eastbound W - Westbound Blank - Not stated/not state highway
Tow Away	Char(1)		Y - Yes N - No
Collision Severity	Char(1)	the injury level severity of the collision (highest level of injury in collision)	1 - Fatal 2 - Injury (Severe) 3 - Injury (Other Visible) 4 - Injury (Complaint of Pain) 0 - PDO
Killed victims	Number(3)	counts victims in the collision with degree of injury of 1	0 to N for each collision
Injured victims	Number(3)	counts victims in the collision with degree of injury of 2, 3, or 4	0 to N for each collision
Party Count	Number(3)	counts total parties in the collision	1 to N for each collision
Primary Collision Factor	Char(1)		A - (Vehicle) Code Violation B - Other Improper Driving C - Other Than Driver D - Unknown E - Fell Asleep - - Not Stated
PCF Violation Code	Char(1)		B - Business and Professions C - Vehicle H - City Health and Safety I - City Ordinance O - County Ordinance P - Penal S - Streets and Highways W - Welfare and Institutions - - Not Stated
PCF Violation Category	Char(2)		01 - Driving or Bicycling Under the Influence of Alcohol or Drug 02 - Impeding Traffic 03 - Unsafe Speed 04 - Following Too Closely 05 - Wrong Side of Road 06 - Improper Passing 07 - Unsafe Lane Change 08 - Improper Turning 09 - Automobile Right of Way

			10 - Pedestrian Right of Way 11 - Pedestrian Violation 12 - Traffic Signals and Signs 13 - Hazardous Parking 14 - Lights 15 - Brakes 16 - Other Equipment 17 - Other Hazardous Violation 18 - Other Than Driver (or Pedestrian) 19 - 20 - 21 - Unsafe Starting or Backing 22 - Other Improper Driving 23 - Pedestrian or "Other" Under the Influence of Alcohol or Drug 24 - Fell Asleep 00 - Unknown - - Not Stated
PCF Violation	Number (5)		
PCF Violation Subsection	Char(1)		Blank if no subsection.
Hit And Run	Char(1)		F - Felony M - Misdemeanor N - Not Hit and Run
Type of Collision	Char(1)		A - Head-On B - Sideswipe C - Rear End D - Broadside E - Hit Object F - Overturned G - Vehicle/Pedestrian H - Other - - Not Stated
Motor Vehicle Involved With	Char(1)		A - Non-Collision B - Pedestrian C - Other Motor Vehicle D - Motor Vehicle on Other Roadway E - Parked Motor Vehicle F - Train G - Bicycle H - Animal I - Fixed Object J - Other Object - - Not Stated

Ped Action	Char(1)		A - No Pedestrian Involved B - Crossing in Crosswalk at Intersection C - Crossing in Crosswalk Not at Intersection D - Crossing Not in Crosswalk E - In Road, Including Shoulder F - Not in Road G - Approaching/Leaving School Bus - - Not Stated
Road Surface	Char(1)		A - Dry B - Wet C - Snowy or Icy D - Slippery (Muddy, Oily, etc.) - - Not Stated
Road Condition 1	Char(1)		A - Holes, Deep Ruts B - Loose Material on Roadway C - Obstruction on Roadway D - Construction or Repair Zone E - Reduced Roadway Width F - Flooded G - Other H - No Unusual Condition - - Not Stated
Road Condition 2	Char(1)		same as road condition 1 above
Lighting	Char(1)		A - Daylight B - Dusk - Dawn C - Dark - Street Lights D - Dark - No Street Lights E - Dark - Street Lights Not Functioning - - Not Stated
Control Device	Char(1)		A - Functioning B - Not Functioning C - Obscured D - None - - Not Stated
CHP Road Type	Char(1)		May be blank
Pedestrian Collision	Char(1)	indicates whether the collision involved a pedestrian	Y or blank
Bicycle Collision	Char(1)	indicates whether the collision involved a bicycle	Y or blank
Motorcycle Collision	Char(1)	indicates whether the collision involved a motorcycle	Y or blank
Truck Collision	Char(1)	indicates whether the collision involved a big truck	Y or blank

Not Private Property	Char(1)	indicates whether the collision occurred on private property	Y or blank
Alcohol Involved	Char(1)	indicates whether the collision involved a party that had been drinking	Y or blank
Statewide Vehicle Type At Fault	Char(1)	indicates the Statewide Vehicle Type of the party who is at fault	see Party folder Statewide Vehicle Type item
CHP Vehicle Type At Fault	Char(2)	indicates the CHP Vehicle Type of the party who is at fault	see Party folder CHP Vehicle Type Towing item
Severe Injury count	Number(3)	counts victims in the collision with degree of injury of 2	0 to N for each collision
Other Visible Injury count	Number(3)	counts victims in the collision with degree of injury of 3	0 to N for each collision
Complaint of Pain Injury count	Number(3)	counts victims in the collision with degree of injury of 4	0 to N for each collision
Pedestrian Killed count	Number(3)	Counts the victims in the collision with party type of 2 and degree of injury is 1	0 or 1 for each collision
Pedestrian Injured count	Number(3)	Counts the victims in the collision with party type of 2 and degree of injury is 2, 3, or 4	0 or 1 for each collision
Bicyclist Killed count	Number(3)	Counts the victims in the collision with party type of 4 and degree of injury is 1	0 to N for each collision
Bicyclist Injured count	Number(3)	Counts the victims in the collision with party type of 4 and degree of injury is 2, 3, or 4	0 to N for each collision
Motorcyclist Killed count	Number(3)	counts victims in the collision with statewide vehicle type of C or O and degree of injury of 1	0 to N for each collision
Motorcyclist Injured count	Number(3)	counts victims in the collision with statewide vehicle type of C or O and degree of injury of 2, 3, or 4	0 to N for each collision
Primary Ramp	Varchar2(2)		NO-NB On Ramp, NF-NB Off Ramp, SO-SB On Ramp, SF-SB Off Ramp, EO-EB On Ramp, EF-EB Off Ramp, WO-WB On Ramp, WF-WB Off Ramp, To, From, Transition, Collector, Connector & blank
Secondary Ramp	Varchar2(2)		Same as above
Latitude			
Longitude			



## SWITRS Party Raw Data Export Layout

Case Id	Varchar2(19)	the unique identifier of the collision report (barcode beginning 2002; 19 digit code prior to 2002)	
Party Number	Number(3)		1 to 999
Party Type	Char(1)		1 - Driver (including Hit and Run) 2 - Pedestrian 3 - Parked Vehicle 4 - Bicyclist 5 - Other - - Not Stated
At Fault	Char(1)	indicates whether the party was at fault in the collision	Y
Party Sex	Char(1)	the code of the sex of the party	M - Male F - Female - - Not Stated
Party Age	Number(3)	the age of the party at the time of the collision	0 to 100+ (0 & blank = Not Stated)
Party Sobriety	Char(1)		A - Had Not Been Drinking B - Had Been Drinking, Under Influence C - Had Been Drinking, Not Under Influence D - Had Been Drinking, Impairment Unknown G - Impairment Unknown H - Not Applicable - - Not Stated
Party Drug Physical	Char(1)		E - Under Drug Influence F - Impairment - Physical H - Not Applicable I - Sleepy/Fatigued - - Not Stated
Direction Of Travel	Char(1)		N - North S - South E - East W - West - - Not Stated
Party Safety Equipment 1	Char(1)		A - None in Vehicle B - Unknown C - Lap Belt Used D - Lap Belt Not Used E - Shoulder Harness Used F - Shoulder Harness Not Used

			G - Lap/Shoulder Harness Used H - Lap/Shoulder Harness Not Used J - Passive Restraint Used K - Passive Restraint Not Used L - Air Bag Deployed M - Air Bag Not Deployed N - Other P - Not Required Q - Child Restraint in Vehicle Used R - Child Restraint in Vehicle Not Used S - Child Restraint in Vehicle, Use Unknown T - Child Restraint in Vehicle, Improper Use U - No Child Restraint in Vehicle V - Driver, Motorcycle Helmet Not Used W - Driver, Motorcycle Helmet Used X - Passenger, Motorcycle Helmet Not Used Y - Passenger, Motorcycle Helmet Used - or blank - Not Stated
Party Safety Equipment 2	Char(1)		same as Party Safety Equipment 1 above
Financial Responsibility	Char(1)		N - No Proof of Insurance Obtained Y - Yes, Proof of Insurance Obtained O - Not Applicable (used for parked cars, bicyclists, pedestrians, and party type others) E - Used if the officer is called away from the scene of the collision prior to obtaining the insurance information Blank - not stated
Special Information 1	Char(1)		A - Hazardous Materials - - Not Stated
Special Information 2	Char(1)		B - Cell Phone in Use (4/1/01) C - Cell Phone Not in Use (4/1/01) D - No Cell Phone/Unknown (4/1/01) - - Not Stated (4/1/01)
Special Information 3	Char(1)		E - School Bus Related (1/1/02) - - Not Stated (1/1/02)
OAF Violation Code	Char(1)		B - Business and Professions C - Vehicle H - City Health and Safety I - City Ordinance O - County Ordinance P - Penal S - Streets and Highways

			W - Welfare and Institutions - - Not Stated
OAF Violation Category	Char(2)		01 - Under Influence in Public (647F) 02 - County Ordinance 03 - City Ordinance 05 - Business/Professions Code 06 - Felony Penal Code 08 - Controlled Substances (Felony Health and Safety) 09 - Health/Safety Code (Misdemeanor) 10 - Penal Code (Misdemeanor) 11 - Streets/Highways Code 13 - Welfare/Institutions Code 15 - Manslaughter 16 - Non-Vehicle Code Not Specified Above 17 - Fish & Game Code 18 - Agriculture Code 19 - Hit and Run 20 - Driving or Bicycling Under the Influence of Alcohol or Drug 21 - Improper Lane Change 22 - Impeding Traffic 23 - Failure to Heed Stop Signal 24 - Failure to Heed Stop Sign 25 - Unsafe Speed 26 - Reckless Driving 27 - Wrong Side of Road 28 - Unsafe Lane Change 29 - Improper Passing 30 - Following Too Closely 31 - Improper Turning 33 - Automobile Right-of-Way 34 - Pedestrian Right-of-Way 35 - Pedestrian Violation 37 - 38 - Hazardous Parking 39 - Lights 40 - Brakes 43 - Other Equipment 44 - Other Hazardous Movement 46 - Improper Registration 47 - Other Non-Moving Violation 48 - Excessive Smoke 49 - Excessive Noise

			50 - Overweight 51 - Oversize 52 - Over Maximum Speed 53 - Unsafe Starting or Backing 60 - Off-Highway Vehicle Violation 61 - Child Restraint 62 - Seat Belt 63 - Seat Belt (Equipment) 00 or Blank - Not Stated
OAF Violation Section	Number(5)		
OAF Violation Suffix	Char(1)		Blank may appear if no suffix.
Other Associated Factor 1	Char(1)		A - Violation E - Vision Obscurements F - Inattention (beginning 1/1/01, inattention not stated) G - Stop and Go Traffic H - Entering/Leaving Ramp I - Previous Collision J - Unfamiliar With Road K - Defective Vehicle Equipment L - Uninvolved Vehicle M - Other N - None Apparent O - Runaway Vehicle P - Inattention, Cell Phone (1/1/01) Q - Inattention, Electronic Equip.(1/1/01) R - Inattention, Radio/CD (1/1/01) S - Inattention, Smoking (1/1/01) T - Inattention, Eating (1/1/01) U - Inattention, Children (1/1/01) V - Inattention, Animal (1/1/01) W - Inattention, Personal Hygiene (1/1/01) X - Inattention, Reading (1/1/01) Y - Inattention, Other (1/1/01) - - Not Stated
Other Associated Factor 2	Char(1)		same as OAF 1 above
Party Number Killed	Number(3)	counts victims in the party with degree of injury of 1	0 to N for each party
Party Number Injured	Number(3)	counts victims in the party with degree of injury of 2, 3, or 4	0 to N for each party

Movement Preceding Collision	Char(1)		A - Stopped B - Proceeding Straight C - Ran Off Road D - Making Right Turn E - Making Left Turn F - Making U-Turn G - Backing H - Slowing/Stopping I - Passing Other Vehicle J - Changing Lanes K - Parking Maneuver L - Entering Traffic M - Other Unsafe Turning N - Crossed Into Opposing Lane O - Parked P - Merging Q - Traveling Wrong Way R - Other - - Not Stated
Vehicle Year	Number(4)	the model year of the party's vehicle	9999 or blank = not stated
Vehicle Make	Varchar2(50)	the full description of the make of the party's vehicle	
Statewide Vehicle Type	Char(1)		A - Passenger Car/Station Wagon B - Passenger Car with Trailer C - Motorcycle/Scooter D - Pickup or Panel Truck E - Pickup or Panel Truck with Trailer F - Truck or Truck Tractor G - Truck or Truck Tractor with Trailer H - Schoolbus I - Other Bus J - Emergency Vehicle K - Highway Construction Equipment L - Bicycle M - Other Vehicle N - Pedestrian O - Moped - or blank - Not Stated
CHP Vehicle Type Towing	Char(2)		01 - Passenger Car, Station Wagon, or Jeep 02 - Motorcycle 03 - Motor-Driven Cycle (< 15 hp) 04 - Bicycle 05 - Motorized Bicycle

			<ul style="list-style-type: none"> <li>06 - All-Terrain Vehicle (ATV)</li> <li>07 - Sport Utility Vehicle</li> <li>08 - Minivan</li> <li>09 - Paratransit Bus</li> <li>10 - Tour Bus</li> <li>11 - Other Commercial Bus</li> <li>12 - Non-Commercial Bus</li> <li>13 - Schoolbus Public I (eff. 2002)</li> <li>14 - Schoolbus Public II (eff. 2002)</li> <li>15 - Schoolbus Private I (eff. 2002)</li> <li>16 - Schoolbus Private II (eff. 2002)</li> <li>17 - Schoolbus Contractual I (eff. 2002)</li> <li>18 - Schoolbus Contractual II (eff. 2002)</li>   <li>19 - General Public Paratransit Vehicle (eff 2002)</li> <li>20 - Public Transit Authority</li> <li>21 - Two-Axle Tank Truck</li> <li>22 - Pickup or Panel Truck</li> <li>23 - Pickup Truck With Camper</li> <li>24 - Three-Axle Tank Truck</li> <li>25 - Truck Tractor</li> <li>26 - Two-Axle Truck</li> <li>27 - Three-Axle Truck</li> <li>41 - Ambulance</li> <li>42 - Dune Buggy</li> <li>43 - Fire Truck (not rescue)</li> <li>44 - Forklift</li> <li>45 - Highway Construction Equipment (only while not in construction area)</li> <li>46 - Implement of Husbandry</li> <li>47 - Motor Home (40 ft or less)</li> <li>48 - CHP, Police, or Sheriff Car (emergency service or not)</li> <li>49 - CHP, Police, or Sheriff Motorcycle (emergency service or not)</li> <li>50 - Mobile Equipment</li> <li>51 - Farm Labor Vehicle (certified)</li> <li>55 - Two-Axle Tow Truck</li> <li>56 - Three-Axle Tow Truck</li> <li>57 - Farm Labor Vehicle (non-certified)</li> <li>58 - Farm Labor Transporter</li> <li>59 - Motorhome (over 40 ft)</li> </ul>
--	--	--	---

			<p>60 - Pedestrian (includes motorized wheelchair)</p> <p>61 - School Pupil Activity Bus I (prior to 2002)</p> <p>62 - School Pupil Activity Bus II (prior to 2002)</p> <p>63 - "Youth" Bus</p> <p>64 - School Pupil Activity Bus I (eff. 2002)</p> <p>65 - School Pupil Activity Bus II (eff. 2002)</p> <p>66 - School Bus - No Pupils on Board (eff. 2002)</p> <p>71 - Passenger Car - Hazardous Materials Only</p> <p>72 - Pickups and Panels - Hazardous Materials Only</p> <p>73 - Pickups and Campers - Hazardous Materials Only</p> <p>75 - Truck Tractor - Hazardous Materials Only</p> <p>76 - Two-Axle Truck - Hazardous Materials Only</p> <p>77 - Three or More Axle Truck - Hazardous Materials Only</p> <p>78 - Two-Axle Tank Truck - Hazardous Materials Only</p> <p>79 - Three-Axle Tank Truck - Hazardous Materials Only</p> <p>81 - Passenger Car - Hazardous Waste or Waste/Material Combo</p> <p>82 - Pickups and Panels - Hazardous Waste or Waste/Material Combo</p> <p>83 - Pickups and Campers - Hazardous Waste or Waste/Material Combo</p> <p>85 - Truck Tractor - Hazardous Waste or Waste/Material Combo</p> <p>86 - Two-Axle Truck - Hazardous Waste or Waste/Material Combo</p> <p>87 - Three or More Axle Truck - Hazardous Waste or Waste/Material Combo</p> <p>88 - Two-Axle Tank Truck - Hazardous Waste or Waste/Material Combo</p> <p>89 - Three-Axle Tank Truck - Hazardous Waste or Waste/Material Combo</p> <p>94 - Motorized Transportation Device</p>
--	--	--	--

			<p>95 - Miscellaneous Non-Motorized Vehicle(Ridden Animal, Animal-Drawn Conveyance, Train, Or Building) With Victim</p> <p>96 - Miscellaneous Motorized Vehicle (Golf Cart)</p> <p>97 - Low Speed Vehicle</p> <p>99 or dash - Not Stated or Unknown (Hit and Run)</p>
CHP Vehicle Type Towed	Char(2)		<p>same as CHP vehicle type towing above with the following additions:</p> <p>28 - Semi-Tank Trailer</p> <p>29 - Pull-Tank Trailer</p> <p>30 - Two-Tank Trailer</p> <p>31 - Semi-Trailer</p> <p>32 - Pull Trailer (includes dolly)</p> <p>33 - Two Trailers (or 31 + 32)</p> <p>34 - Boat Trailer</p> <p>35 - Utility Trailer</p> <p>36 - Trailer Coach</p> <p>37 - Extralegal Permit Load</p> <p>38 - Pole, Pipe, or Logging Dolly</p> <p>39 - Three Trailers (or 31 + 33)</p> <p>40 - Federally Legal Semi-Trailer</p> <p>52 - Federally Legal Double Cargo Combo (over 75 ft)</p> <p>53 - Fifth Wheel Trailer</p> <p>54 - Container Chassis</p> <p>98 – Emergency Vehicle on an Emergency Run</p>
Party Race	Char(1)		<p>A - Asian            O - Other</p> <p>B - Black            W - White</p> <p>H - Hispanic        Blank - Not stated</p> <p>Eff. 1/1/2002</p>



## SWITRS Victim Raw Data Export Layout

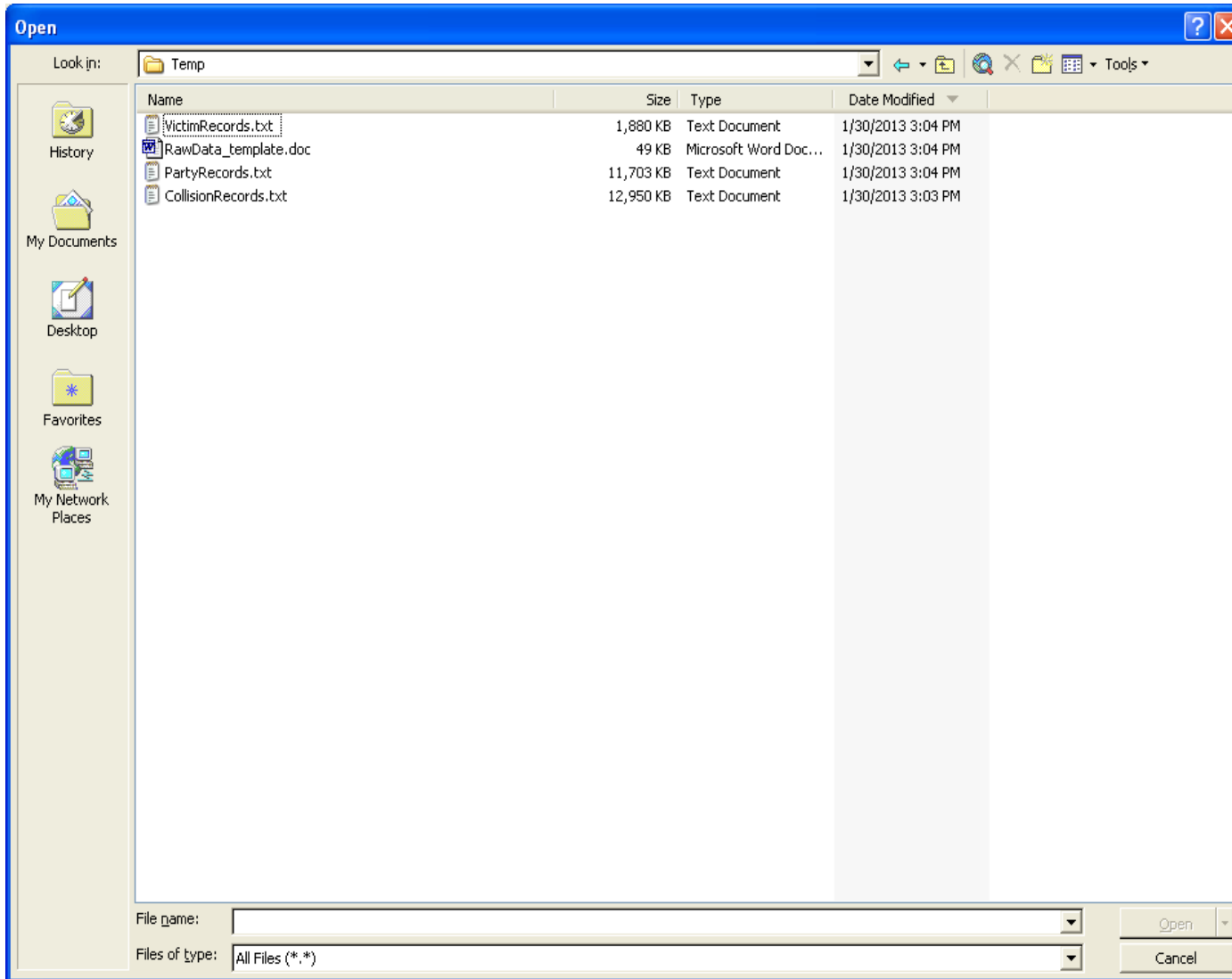
Case Id	Varchar2(19)	the unique identifier of the collision report (barcode beginning 2002; 19 digit code prior to 2002)	
Party Number	Number (3)		1 to 999
Victim Role	Char(1)		1 - Driver 2 - Passenger (includes non-operator on bicycle or any victim on/in parked vehicle or multiple victims on/in non-motor vehicle) 3 - Pedestrian 4 - Bicyclist 5 - Other (single victim on/in non-motor vehicle; e.g. ridden animal, horse-drawn carriage, train, or building) 6 - Non-Injured Party
Victim Sex	Char(1)		M - Male F - Female - - Not Stated
Victim Age	Number(3)	the age of the victim at the time of the collision	0 – 125 998 – Not Stated 999 – Fatal Fetus
Victim Degree of Injury	Char(1)		1 - Killed 2 - Severe Injury 3 - Other Visible Injury 4 - Complaint of Pain 5 – Suspected Serious Injury 6 – Suspected Minor Injury 7 – Possible Injury 0 - No Injury
Victim Seating Position	Char(1)		1 - Driver 2 thru 6 - Passengers 7 - Station Wagon Rear 8 - Rear Occupant of Truck or Van 9 - Position Unknown 0 - Other Occupants A thru Z - Bus Occupants - - Not Stated
Victim Safety Equipment 1	Char(1)		A - None in Vehicle B - Unknown C - Lap Belt Used D - Lap Belt Not Used

			E - Shoulder Harness Used F - Shoulder Harness Not Used G - Lap/Shoulder Harness Used H - Lap/Shoulder Harness Not Used J - Passive Restraint Used K - Passive Restraint Not Used L - Air Bag Deployed M - Air Bag Not Deployed N - Other P - Not Required Q - Child Restraint in Vehicle Used R - Child Restraint in Vehicle Not Used S - Child Restraint in Vehicle, Use Unknown T - Child Restraint in Vehicle, Improper Use U - No Child Restraint in Vehicle V - Driver, Motorcycle Helmet Not Used W - Driver, Motorcycle Helmet Used X - Passenger, Motorcycle Helmet Not Used Y - Passenger, Motorcycle Helmet Used - or blank - Not Stated
Victim Safety Equipment 2	Char(1)		same as Victim Safety Equipment 1 above (eff. Jan 2002)
Victim Ejected	Char(1)		0 - Not Ejected 1 - Fully Ejected 2 - Partially Ejected 3 - Unknown - - Not Stated



## APPENDIX A – How to Open the Files in Excel

First, you must extract all 3 files (CollisionRecords.txt, PartyRecords.txt, VictimRecords.txt) to a directory on your hard drive. Next, start Excel and open any of the three files. In the dialogue box, make sure you select All Files (\*.\*) for Files of type:, otherwise only Excel files will be displayed.



A wizard will immediately appear as follows:

**Text Import Wizard - Step 1 of 3**

The Text Wizard has determined that your data is Delimited.  
If this is correct, choose Next, or choose the data type that best describes your data.

**Original data type**

Choose the file type that best describes your data:

- Delimited** - Characters such as commas or tabs separate each field.
- Fixed width** - Fields are aligned in columns with spaces between each field.

Start import at row:  File origin:

Preview of file C:\Temp\CollisionRecords.txt.

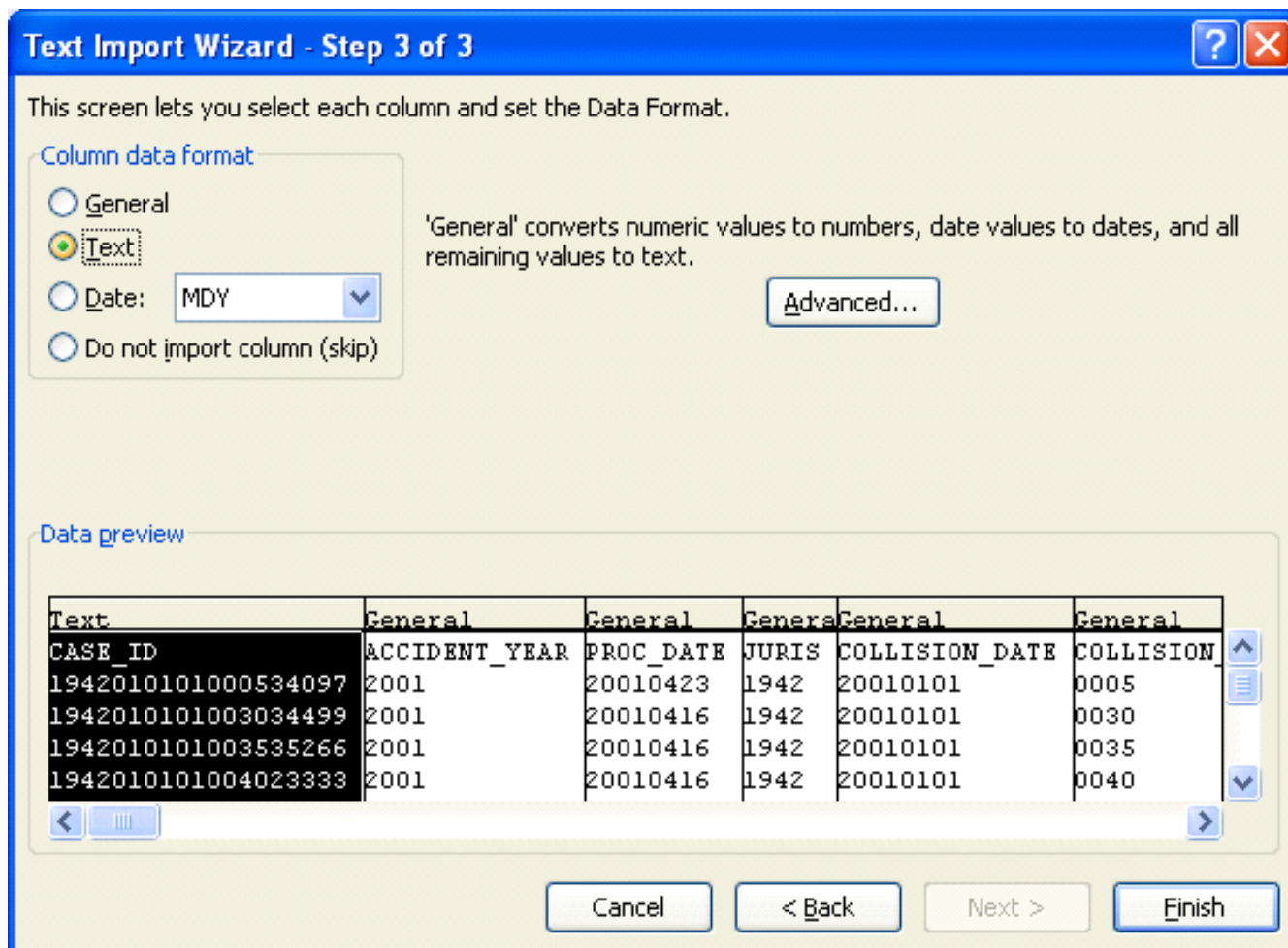
	CASE_ID	ACCIDENT_YEAR	PROC_DATE	JURIS	COLLISION_DATE	COLLISION_TIME	OFFIC
1	"1942010101000534097"	,2001,	20010423,	1942,	20010101,	0005,"34097"	,"1129",
2	"1942010101003034499"	,2001,	20010416,	1942,	20010101,	0030,"34499"	,"1024",
3	"1942010101003535266"	,2001,	20010416,	1942,	20010101,	0035,"35266"	,"1444",
4	"1942010101004023333"	,2001,	20010416,	1942,	20010101,	0040,"23333"	,"1653",
5							

Buttons: Cancel, < Back, **Next >**, Finish

Click the Next> button



Select checkbox for Comma and click the Next>button.



Select radio button for Text and click Finish. The CASE\_ID field now displays as a 19 digits (if the accident date is in 2001 or earlier, or as 7 digits with leading zeroes if the collision date is later than 2001).

Save the file as an .xls Excel file. Repeat the steps for the other 2 files.

